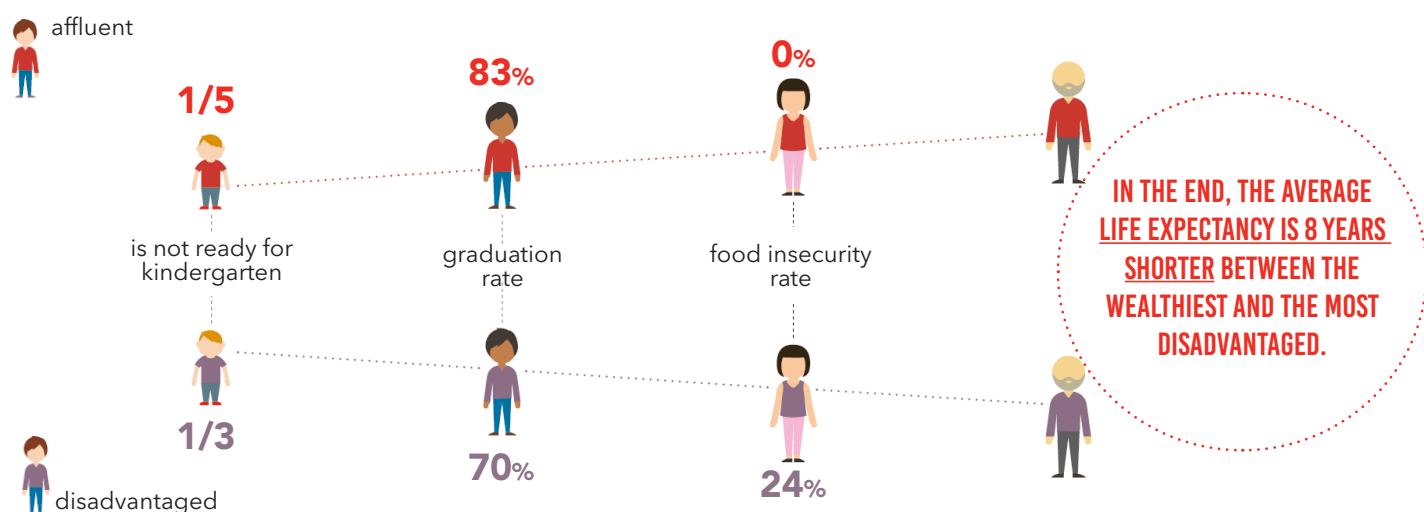


INFLATION AND HOUSING CHALLENGES ADD AN ADDITIONAL BURDEN ON INDIVIDUALS AND FAMILIES EXPERIENCING POVERTY AND SOCIAL EXCLUSION.

Poverty has tangible consequences on the life trajectory of these individuals:



That is why Centraide Hautes-Laurentides works on a number of dimensions of poverty and social exclusion, including the success of young people, basic needs, the inclusion of vulnerable and marginalized people and the development of inclusive living environments. **When you give to Centraide, you are giving a vulnerable person the opportunity to reach their full potential and improve their living conditions.**

Let's all lend a hand



Investing more than \$320,000 in the community.

With the following organizations and initiatives, Centraide is making a difference in the lives of thousands of people.

MRC d'Antoine-Labelle :

Centre d'action bénévole Léonie-Bélanger
Centre de pédiatrie sociale en communauté
d'Antoine-Labelle
Cultiver pour nourrir
La Griffes d'Alpha
Maison Lyse-Beauchamp, Ressource
d'hébergement communautaire
Mesures alternatives des Vallées du Nord

MRC des Laurentides :

159 rue Principale
Bouffe Laurentienne
L'Envolée RASM, Ressource alternative en
santé mentale
Maison des jeunes de Labelle
Maison des Jeunes de Mont-Tremblant
Tornado Jeunesse
Maison de la famille du Nord
Parents uniques des Laurentides

Regional :

Conseil régional de développement social
des Laurentides
L'Écluse des Laurentides
Prévoyance envers les Aînés des Laurentides

The contribution of Centraide goes beyond financial support. We are present locally, we understand the issues, and we play a unifying role with community partners. Through our commitment, we truly contribute to the sustainable social development of communities.

211

Designated donations
to other organizations
and assistance
programs.

Partnership with
social development
committees and
roundtables.

Other actions and
services rendered in
the community.



Centraide
Hautes-Laurentides



C.P. 154, Mont-Laurier (QC) J9L 3G9
819 623-4090 | maregioncentraide.com