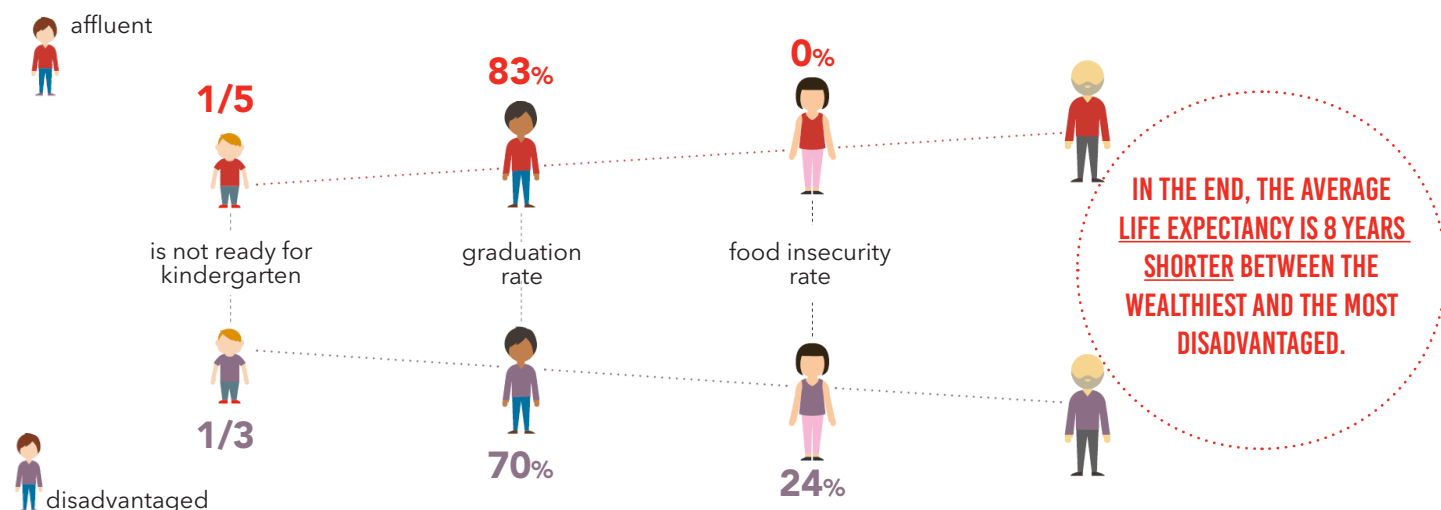


INFLATION AND HOUSING CHALLENGES ADD AN ADDITIONAL BURDEN ON INDIVIDUALS AND FAMILIES EXPERIENCING POVERTY AND SOCIAL EXCLUSION.

Poverty has a tangible impact on people's lives :



That is why Centraide Sud-Ouest du Québec works on a number of dimensions of poverty and social exclusion, including the success of young people, basic needs, the inclusion of vulnerable and marginalized people and the development of inclusive living environments. **When you give to Centraide, you are giving a vulnerable person the opportunity to reach their full potential and improve their living conditions.**

LET'S ALL LEND A HAND



Investing more than \$480,000 in the community.

With the following organizations and initiatives, Centraide is making a difference in the lives of thousands of people.

MRC de Beauharnois-Salaberry :

Café des deux pains de Valleyfield
Coin du Partage Beauharnois
Comité logement Beauharnois
Comité de logement Valleyfield
Maison des jeunes de Beauharnois
L'ABC de la famille
Psycohésion
Service Alimentaire Communautaire

MRC de Vaudreuil-Soulanges:

Arc-en-ciel Vaudreuil-Soulanges*
Centre d'action bénévole l'Actuel
Centre d'action bénévole Soulanges*
Grand Rassemblement des Aînés de Vaudreuil et Soulanges
L'Aiguillage
Maison de la famille Vaudreuil-Soulanges
Maison des Jeunes de Rigaud

MRC du Haut-St-Laurent:

La Bouffe Additionnelle*
Pacte de rue

Régional :

ACEF de la Rive-Sud*
Club de la joie de vivre
Concertation Horizon
L'Antichambre 12-17, Hébergement jeunesse du Suroît
Maison d'hébergement dépannage de Valleyfield
Via L'Anse*

* Retention of the partnership

The contribution of Centraide goes beyond financial support. We are present locally, we understand the issues, and we play a unifying role with community partners. Through our commitment, we truly contribute to the sustainable social development of communities.

211

Donations to other organizations and assistance programs

Partnership with social development committees and issue tables

Other actions and services rendered in the community



Centraide
Sud-Ouest du Québec



87, rue Sainte-Cécile, Salaberry-de-Valleyfield (QC) J6T 1L9
450 371-2061 | centraide-rcoq.ca/soq