



# SOCIAL INVESTMENT FUND

of the Mining Industry of Abitibi-Témiscamingue and Nord-du-Québec





Photo credit: Jenny-Lee Larivière, Westwood



**Centraide**  
Abitibi Témiscamingue  
et Nord-du-Québec

# Contents

## Sections

1. Context	05
2. Regional Overview	09
3. The Mining Industry in the Region	14
4. Why Centraide	17
5. The Investment Fund	21
6. Founding Members	24
7. Visibility Plan	36



Photo credit:  
Jenny-Lee Larivière, Westwood



**BEN  
CHALMERS**

Senior Vice  
President

## **THE MINING ASSOCIATION OF CANADA**

*The Canadian mining industry has long made it a priority to build and maintain respectful, strong and trust-based partnerships with communities affected by or interested in mineral exploration and mining operations. We are very pleased to see this project come to fruition as it illustrates our industry's commitment to meaningful community engagement and development. The members of the Mining Association of Canada actively demonstrate this commitment through their adherence to the TSM Protocol: Indigenous and Community Relationships.*

---

## **QUÉBEC MINING ASSOCIATION**



**EMMANUELLE  
TOUSSAINT**

President and Chief  
Executive Officer

*The mining industry has long been involved in a variety of projects to support local communities. This innovative approach to community investment builds on synergies already present across the region, and it is by drawing on this collective strength that we can expect a concrete and lasting impact for our communities. The Québec Mining Association supports this partnership, which we are confident will make a real difference.*

## **QUÉBEC MINERAL EXPLORATION ASSOCIATION**



**ALAIN  
POIRIER**

Executive  
Director

*For the members of the QMEA, the mining industry is an integral part of community development. Beyond the resources it develops, it helps build communities where people can thrive, attract talent and enjoy a genuine quality of life. Supporting Centraide is a natural extension of that commitment.*



DAN  
CLEMENT

President and Chief  
Executive Officer

## UNITED WAY CENTRAIDE CANADA

*The Social Investment Fund of the Mining Industry is a significant milestone for the United Way Centraide Movement in Canada and a remarkable example of innovation in philanthropy and community investment. Born from a collaboration between mining industry leaders and Centraide Abitibi Témiscamingue et Nord-du-Québec, this fund demonstrates how economic partners can join forces to strengthen communities in a sustainable and meaningful way. As the first initiative of its kind in Canada, I commend the vision and commitment of the founding partners. This initiative reflects the power of United Way Centraide to bring partners together, inspire collective action and generate equitable and lasting social impact across the country.*

---

## CENTRAIDE ABITIBI- TÉMISCAMINGUE ET NORD-DU-QUÉBEC



MÉLANIE  
PERREULT

Director of  
Development and  
Partnerships

*This fund represents a model of territorial innovation in the region. The boldness of the founders who chose to join forces with Centraide ATNQ has made this lasting alliance possible. By combining the mining industry's capacity with our community expertise, we are deploying a powerful and inclusive driver for change that goes beyond financial support. Every investment will become an engine of progress for our communities.*

## CENTRAIDE DES RÉGIONS CENTRE-OUEST DU QUÉBEC



JULIE  
COLBERT

Executive Director

*The FISIM is the result of an ambitious regional initiative. This unprecedented model of social investment reflects the commitment of our regional team and its mining industry partners. This fund represents a shared pledge to our communities.*



VINCENT  
ROUSSON  
Rector

## UNIVERSITÉ DU QUÉBEC EN ABITIBI-TÉMISCAMINGUE

*The Université du Québec en Abitibi-Témiscamingue is proud to be associated with the Social Investment Fund of the mining industry to contribute to building stronger, more equal and resilient communities. Education remains a powerful tool for reducing inequality and promoting equal opportunity. As a partner, we want to actively take part in this collective effort that supports sustainable socioeconomic development in Abitibi-Témiscamingue and Nord-du-Québec.*

Founded in 1983, UQAT now stands out on multiple fronts in teaching, research and research-creation. With recognized expertise and an annual research volume approaching \$24 million, the University is well positioned not only in Québec, but also nationally and internationally. Offering 160 undergraduate, graduate and doctoral programs, the University welcomes more than 7,000 students, including over 800 from around the world.





# CONTEXT

## ABITIBI-TÉMISCAMINGUE AND NORD-DU-QUÉBEC: DEEPLY ROOTED, FORWARD-LOOKING

Shaped by the vastness of their landscapes, their close-knit communities and a strong regional identity, these regions were built around the development of their natural resources and the dedication of their people. Here, progress is not measured solely in kilometers or extraction volumes, but also in quality of life, social cohesion and a shared commitment to building strong, inclusive and sustainable communities.

These two regions are defined **by a strong industrial base, of which the mining industry is both a historic and contemporary pillar. They shape the territory, create jobs, attract talent and generate economic activity essential to the vitality of their communities.** From generation to generation, the mining industry has helped build cities, support families and helped put this region on the map.

However, the economy and social well-being do not operate in silos. They are deeply interdependent.

A strong economy needs healthy communities to prosper.

Conversely, **social development relies on a solid economic base to develop sustainably.** Housing, food security, educational success, mental health and social inclusion: these issues directly affect people's ability to take part fully in economic and community life. One cannot exist without the other. Together, they form a fragile but essential balance.

Yet, as elsewhere in Québec and Canada, Abitibi-Témiscamingue and Nord-du-Québec are facing a marked increase in social needs. Pressures on the cost of living, the scarcity of affordable housing, isolation, mental health challenges, and persistent inequalities are leaving a growing part of the population vulnerable. In this context, **quality of life becomes a key driver for people's full potential, for the region's attractiveness and for workforce retention.** Investing in social well-being is investing in the resilience and future of our communities.

The mining industry now has a unique opportunity to play a long-term strategic role. Beyond one-time donations and sponsorships, it has the capacity to contribute to a sustainable social investment model, aligned with its vision, values and its longstanding presence in the region. A model that goes beyond the short term and aims to leave a tangible social legacy for current and future generations.

**This is the spirit behind the creation of the Social Investment Fund of the Mining Industry (FISIM),** as a partnership between mining industry members and Centraide Abitibi Témiscamingue et Nord-du-Québec. This fund is designed as a collective mechanism to ensure the sustainability of social investments in the region, support community agencies and other local initiatives, and strengthen the social fabric for the long term, in line with the territory's economic development.

Joining this fund means investing differently.

It means contributing to a meaningful project, reflecting the realities of our region, and actively taking part in building a future where the economy and social well-being advance together.

**We invite you to be part of this movement and to become a partner of a collective legacy that will have a lasting impact on our communities.**

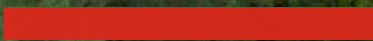




Photo credit: Troilus Mining Corp.

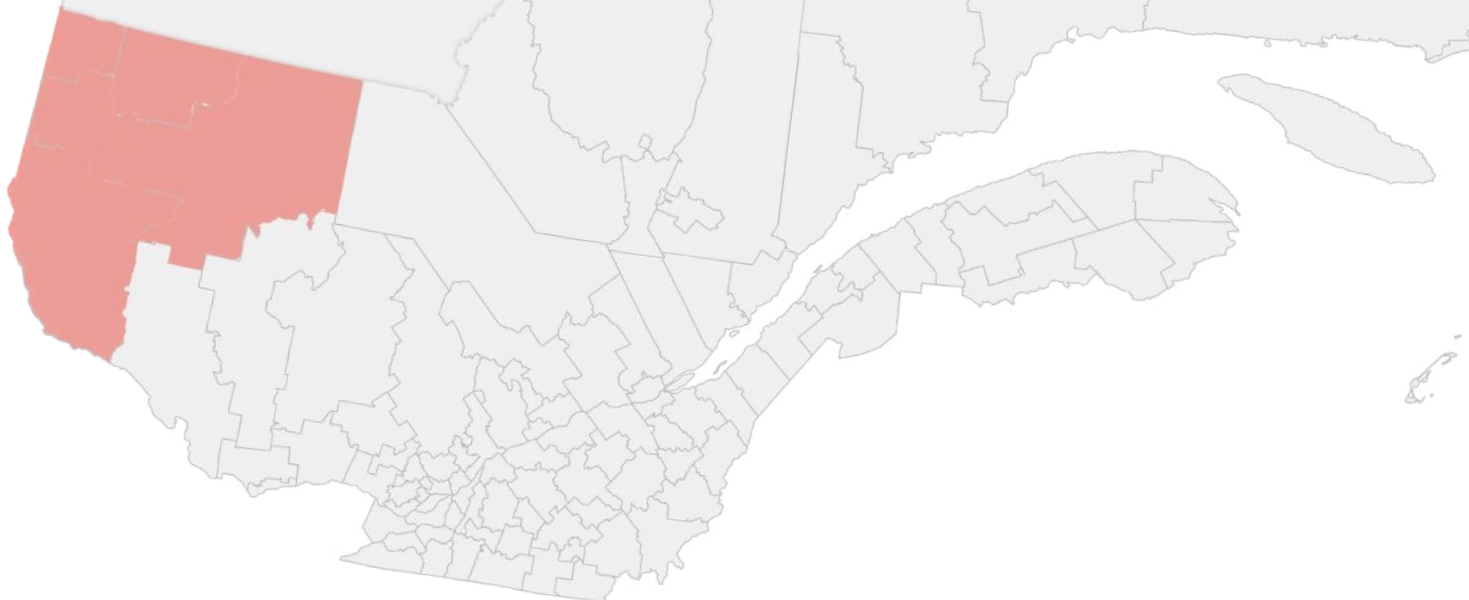
An aerial photograph of a two-lane asphalt road stretching vertically through a dense, green forest. The road has a dashed white center line and solid white edge lines. The surrounding forest is lush and green, with some trees showing signs of autumn. The overall scene is serene and natural.

# REGIONAL OVERVIEW



## ABITIBI-TÉMISCAMINGUE

**Located in northwestern Québec, Abitibi-Témiscamingue is a vast and sparsely populated region, covering more than 65,000 km<sup>2</sup>. It is home to approximately 145,000 people, mainly concentrated in Rouyn-Noranda, Val-d'Or, Amos, La Sarre and Ville-Marie, as well as several rural municipalities. This vast territory shapes a regional reality marked by the tight-knit bonds between residents, a keen sense of belonging and great community solidarity.**



## Economy



The regional economy is built on a diversified structure, in which the mining industry holds a central place. It generates quality jobs and significant economic benefits, complementing the forestry, agricultural, manufacturing and public services sectors. This economic dynamic supports community vitality, while also making the region vulnerable to economic cycles.

## Population



Demographically, the region faces population aging and challenges in retaining and attracting workers, particularly among young adults and families.

Despite these challenges, Abitibi-Témiscamingue remains attractive thanks to its quality of life, access to employment and the richness of its natural environment.

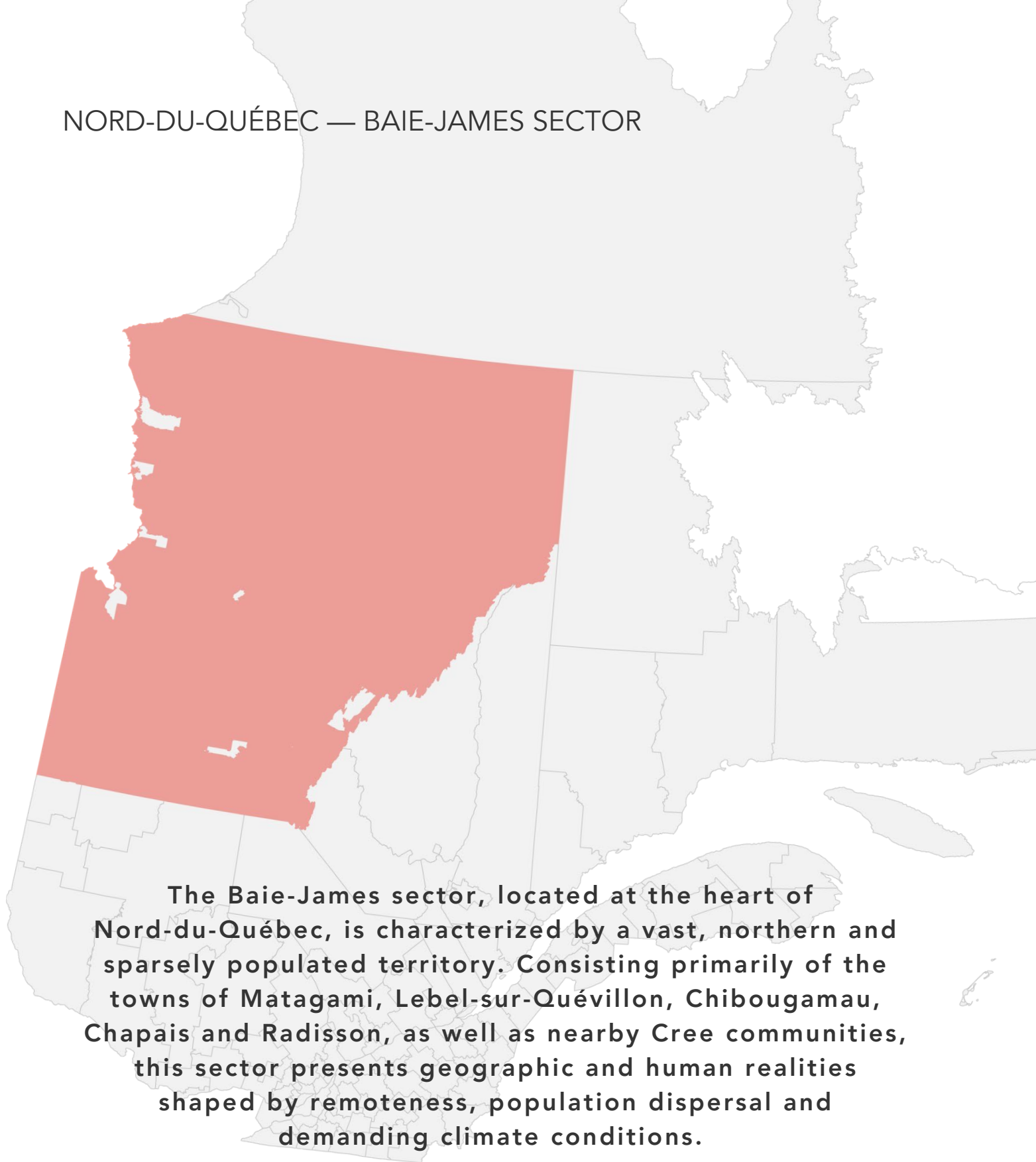
## Social Issues



On the social front, the region faces growing needs, particularly in housing, food security, mental health and isolation. Geographic remoteness and the dispersal of the population exacerbate certain challenges in accessing services. The presence of Indigenous communities, primarily Algonquin, enriches the region's social and cultural fabric, while calling for tailored and inclusive responses.

**In this context, the balanced development of Abitibi-Témiscamingue relies on an essential balance between economic vitality, social cohesion and quality of life, to ensure a sustainable future for all its communities.**

## NORD-DU-QUÉBEC — BAIE-JAMES SECTOR



**The Baie-James sector, located at the heart of Nord-du-Québec, is characterized by a vast, northern and sparsely populated territory. Consisting primarily of the towns of Matagami, Lebel-sur-Quévillon, Chibougamau, Chapais and Radisson, as well as nearby Cree communities, this sector presents geographic and human realities shaped by remoteness, population dispersal and demanding climate conditions.**

## Economy



The economy of the Baie-James sector relies heavily on the extraction of natural resources, particularly the mining, energy and forestry sectors. The mining industry plays a major structural role, generating quality jobs and significant economic benefits for the region and all of Québec.

However, this economy remains vulnerable to economic cycles and workforce mobility, which affects social and residential stability.

## Population



The population of the Baie-James area is composed of both non-Indigenous and Cree communities, whose historical presence and connection to the land shape the regional identity.

Demographically, the northern urban centres face challenges related to population stability and aging, while the Cree communities have a younger and growing population, which leads to increased needs for housing, infrastructure and family services.

## Social Issues



Socially, the sector faces significant issues related to geographic isolation, the high cost of living and access to services. Needs for housing, food security, mental health and family support are very real, both in the Jamesian towns and in the Cree communities.

In this context, community agencies and local partners play an essential role in supporting populations and strengthening community resilience.

**The sustainable development of the Baie-James sector thus relies on an essential balance between economic vitality, social diversity and quality of life, in order to ensure the sustainability and well-being of the communities that live and work there.**

# THE MINING INDUSTRY IN THE REGION

---

Photo showing the mining operations of Eldorado Gold Québec.

# THE MINING INDUSTRY IN THE REGION



Photo credit: Agnico Eagle

In recent years, annual mining investment in Québec reached a record high of \$5.7 billion. Nearly 75% of these investments were made in Nord-du-Québec and Abitibi-Témiscamingue.

## Abitibi-Témiscamingue Overview

**15 313**

jobs generated by the mining companies' production and exploration activities in person-years (2022). [1]

**29 %**

of regional GDP comes from the mining industry. [2]

**400 000 METERS**

drilled, for a total cost of \$81 million in 2023. [3]

## Nord-du-Québec Overview

**1 287**

jobs generated by the mining companies' production and exploration activities in person-years (2022). [4]

**18 %**

of regional GDP comes from the mining industry. [5]

**1 MILLION METERS**

drilled, for a total cost of \$315 million in 2023. [6]

[1] and [4] MINING ASSOCIATION OF QUÉBEC. Contribution of the mining industry to Québec's GDP: 57% increase in eight years, 2024.

[2] and [5] MINING ASSOCIATION OF QUÉBEC. Study on Economic benefits generated by Québec's mining industry in 2022, 2024.

[3] and [6] Institut de la statistique du Québec, Annual Survey on Mining Investment, 2023.



Photo showing the mining operations of Eldorado Gold Québec.

Mining activities generate significant social impacts at every stage of their life cycle, from the exploration phase to site closure.

These impacts, although often addressed from an environmental perspective, extend beyond that dimension alone and require sustained attention.

The main social impacts identified include **pressure on local infrastructure (housing, community services) and economic disruptions following the shutdown of activities (job losses, declining community and municipal revenues).**

Although the restoration plan required by government authorities focuses primarily on environmental aspects, the International Council on Mining & Metals also recommends integrating the social dimension of mine closure as a best practice.

Centraide is uniquely positioned to support social transition plans and help communities move toward a more sustainable future.

A group of young people are shown in a park-like setting, embracing each other. In the foreground, a woman with long brown hair, wearing a red and white striped shirt, is being embraced from behind by a person in a light blue t-shirt. The person in the blue shirt has long, dark dreadlocks. In the background, another person with dark hair is visible, also smiling. The scene is bright and sunny, with green trees and grass in the background.

# WHY CENTRAIDE ?

---

# WHY CENTRAIDE ?

## A Local Social Investor



Centraide’s approach is based on strategic social investments grounded in a long-term vision. By targeting the root causes rather than the symptoms of social issues, Centraide contributes, alongside other key stakeholders, to building more resilient communities.

## Expertise in Social and Community Development

- Strong grasp of social data, research evidence and emerging trends;
- Close collaboration with regional observatories;
- In-depth knowledge of the community services network;
- An active participant in both the socioeconomic and policy ecosystem, ensuring investments complement one another.



## One Investment Framework, Four Approaches



### Prevention

A preventive approach is crucial to social and community development. It fosters stronger communities, improves quality of life and eases pressure on social and health services.



### Social Development

Centraide partners with community agencies or initiatives that deliver lasting solutions and impact, in line with community priorities and mobilization efforts.



### Mobilization and Inclusion

Centraide adopts a progressive and sustained approach that positions people and communities as active participants in their own development, by cultivating their strengths and capacities.



### Regional Equity

Equity does not mean equality. Centraide will consider various factors that justify larger investments in a particular area of intervention or geographic sector.



## Our Areas of Action

### For Young People's Present and Future Success

Acting early to support young people and families at every stage of their journey.

### For Decent Living Conditions

Helping people meet their basic needs.

### For Inclusive Communities

Supporting marginalized groups to build communities where everyone feels valued and fully included.

### For a Strong and Cohesive Social Fabric

Strengthening community action and civic engagement to better fight poverty and social exclusion.

## Centraide as a Preferred Partner in Social Development

This investment fund supports our communities now and for the future. It also enables the industry to maximize its social impact, in line with the actual community needs, while mitigating the effects associated with the natural cycles of the mining industry.

**We are creating a lasting social legacy.**



# THE INVESTMENT FUND

## FUND OVERVIEW

### How the FISIM Works



At its official launch in 2026, Centraide ATNQ is planning a 10-year timeline to build the Social Investment Fund of the Mining Industry.

Here are the fund's key features:

- Redistribution of 5% of the fund's net return to Centraide ATNQ for annual reinvestment in the community to fight poverty and social exclusion.
- Start-up phase (5 years): building a capital base of \$3 million, expected to generate an annual return of approximately \$150,000.
- Phase 1 (10 years): growing the capital to \$15 million, generating an annual return of \$750,000.
- Expected average return: 5% over a ten-year horizon.
- Once the \$15 million threshold is reached, a strategic assessment of community needs will be conducted to define the capitalization target for Phase 2 of the fund.

## Monitoring Investments with Stakeholders



### Performance Report

A detailed annual report will be produced and presented to the FISIM investor members. It will include the following:

- Y the fund's financial performance;
- Y the community investments made;
- Y and the social impacts generated in the region.

### Annual Meeting of FISIM Contributing Members

Each fall, Centraide will hold a meeting entitled Review and Outlook with the industry members contributing to the FISIM. This exclusive event will be dedicated to discussions on current social issues, the presentation of the fund's performance, community investments made and their measured outcomes, in order to collectively guide future investment priorities.



A photograph of an industrial facility, possibly a power plant or refinery, during a dramatic sunset. The sky is filled with large, billowing clouds in shades of orange, yellow, and purple. In the foreground, a snow-covered road with tire tracks leads towards the buildings. Several large, grey industrial buildings are visible, with one prominent tower on the left featuring a lattice structure on top. A large plume of white smoke or steam rises from a building on the right. The overall scene is industrial and atmospheric.

# FOUNDING MEMBERS

---



Photo credit: Troilus Mining Corp.

# TROILUS MINING CORP.

Territory Leader

## JUSTIN REID

*As a founding partner, Troilus Mining Corp. is proud to take on a leadership role in this impactful initiative for our region. The FISIM stands out through its regional focus, its ability to rally the industry around a shared vision, and its participatory approach tailored to the realities of our communities. It represents a foundational and unifying model that we are proud to be part of.*



*Our commitment goes beyond philanthropy. It is a concrete reflection of our responsible development principles and our determination to actively contribute to the lasting prosperity of Nord-du-Québec. As we advance toward the restart of the Troilus project, we are making a clear choice to tie economic success to lasting social impact for the people of this region.*

*The scale of our contribution speaks to our ambitions: supporting concrete action, creating lasting impact and helping build a social legacy that will endure well beyond mining cycles. Our partnership with Centraide ATNQ is built on a shared desire to understand, to act and to build together. We see this fund as an essential tool to strengthen the vitality and future of our communities.*

Troilus Mining Corp. is a Canadian mining company dedicated to the responsible restart of the former Troilus copper-gold mine, located approximately 120 km north of Chibougamau in the Nord-du-Québec region. As one of the largest copper-gold development projects in Canada, Troilus is targeting a near-term return to production, with an expected mine life of 22 years and a processing capacity of 50,000 tonnes per day. Headquartered in Montréal, the company is committed to generating lasting economic benefits for Québec and local communities, through job creation, regional business development and long-term partnerships with Indigenous and local communities.



Photo credit: Troilus Mining Corp.

# DHILMAR MINE ÉLÉONORE

Transformation Partner

## PAUL LÉVESQUE

*The success of a mine is not only measured by what we produce, but by the positive impact we have on our community, today and for the long term. Dhilmar Éléonore is joining forces with Centraide Abitibi Témiscamingue et Nord-du-Québec and the other partners of the Fund to sustainably support high-impact local initiatives. This decision reflects the commitment of our entire team, united by a shared desire to*

*contribute to concrete solutions grounded in the everyday realities of this region.*

Dhilmar operates the Éléonore mine in Eeyou Istchee–Baie-James using modern, safe and responsible methods. The company combines operational performance with social engagement, placing communities and the territory at the heart of its decisions. Our culture is built on collaboration, integrity and co-responsibility, while our values guide every action to maximize the economic and social benefits of our activities.



# AGNICO EAGLE

## Development Pillar

### DANIEL PARÉ

*At Agnico Eagle, being where it counts means investing in our community. By participating in this initiative, we support the community agencies that meet the essential needs of young people, families and more vulnerable individuals in order to build a more supportive and sustainable future for the region together.*

Established and headquartered in Canada, Agnico Eagle is the largest mining company in Canada and the second-largest gold producer in the world. It produces precious metals from operations in Canada, Australia, Finland and Mexico, and holds a high-quality pipeline of exploration and development projects.

Agnico Eagle is a partner of choice within the mining industry and is recognized worldwide as a leader for its exemplary practices in sustainable development.



# MINEOPS

Growth Partner



YANN  
BOISVERT

*At a certain point in my life, I realized that success has value only when it is shared. Through this lasting commitment between Centraide and the industry, we want to support individual and collective resilience and contribute, in our own way, to real and meaningful changes for our community!*

MineOps is a mining contractor specializing in underground infrastructure development, industrial maintenance and the leasing of qualified labour.



# MOREAU

Growth Partner



JEAN-FRANÇOIS  
MOREAU

*This fund affirms our ability to go beyond individual commitments to multiply the impact of our investments in our communities, an ambition that truly comes to life through our alliance with Centraide. By uniting, we create a self-sustaining driver for change.*

With over 48 years of expertise domestically and internationally, Moreau has earned a place among the leading construction firms.



# ELDORADO GOLD QUÉBEC

Mining Builder



SYLVAIN LEHOUX

*We are joining forces to invest where the needs are greatest - today and for the future. Although the mine still has many years of operation ahead, we are working with the community to plan for closure so that the transition is humane, equitable, and sustainable.*

Eldorado Gold Québec operates the Lamaque Mining Complex and supports the regional economy by focusing on safety, innovation and sustainable development.



# CHIBOUGAMAU DRILLING

Mining Builder



STEVE LAROUCHE

*Our participation is not just a financial gesture; it is an active engagement with the social fabric of our territory. We chose to build this partnership on mutual trust, guided by Centraide's in-depth understanding of community issues.*

Based in Nord-du-Québec, Chibougamau Drilling Ltd is a third-generation family business and a major player in the diamond drilling industry.



# FOURNIER

Mining Builder



JÉRÉMI FOURNIER

*For 90 years, our growth has been built on the trust and solidarity of our community. Joining forces with Centraide and industry partners means investing concretely in our social legacy. For us, building sustainably also means supporting the communities that enable us to move forward.*

Founded in 1936 in Val-d'Or, Fournier is a third-generation family business specializing in complex civil and mining engineering projects, offering integrated turnkey solutions across Eastern Canada.



# WESTWOOD IAMGOLD

Mining Builder



LUC JONCAS

*Every action we take today is guided by a commitment to future generations. By working TOGETHER, we leave a lasting legacy worthy of our values and our collective pride!*

IAMGOLD's Westwood mine combines mining performance with environmental responsibility. This innovative and safe workplace places human engagement and community support at the heart of its priorities.





CINDY  
VALENCE

## **ETHOS STRATÉGIE**

Development Ambassador

*This fund embodies a collective will to act now in order to build a lasting legacy, for the benefit of future generations in our region.*

Based in Rouyn-Noranda, ethos is a boutique ESG firm guiding the mining sector toward sustainable growth.



JONATHAN  
CLÉMENT

## **GCM CORPO**

Development Ambassador

*Sustainable industrial development requires concrete investments in the progress and social well-being of our regions.*

GCM and its subsidiaries offer pan-Canadian engineering consulting rooted in the regions, for industrial and social growth.



JEAN  
DION

## **ACCESS INDUSTRIAL GROUPE DION**

Development Ambassador

*It is remarkable to see the entire mining industry, whether mining companies or suppliers, come together and pull in the same direction.*

The company specializes in underground mining equipment and the supply of specialized parts.



## MÉTAL MARQUIS

Development Ambassador

PATRICK  
PERREAULT

*This partnership allows us to transform a business collaboration into a true social legacy for the future of our communities.*

Métal Marquis designs, manufactures and refurbishes custom parts and equipment for the mining, forestry and industrial sectors.



## FRESNILLO PLC PROJET NOVADOR

Development Ambassador

CHANTAL  
DANCOISE

*Engaging with local communities is essential. Rallying around shared goals inspires meaningful action.*

A Fresnillo plc gold project near Val-d'Or, Novador combines global expertise with a commitment to the future.



## TRANSFERT ENVIRONNEMENT & SOCIÉTÉ

Development Ambassador

CÉDRIC  
BOURGOIS

*We are proud to join the industry in creating a sustainable impact and helping drive social value creation.*

A consulting firm specializing in social acceptance that builds lasting bridges between projects and their communities.





# VISIBILITY PLAN

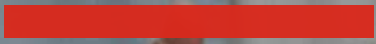




Photo showing the mining operations of Eldorado Gold Québec.

Centraide recognizes the exceptional contribution of the mining industry in supporting communities and offers a visibility and recognition plan to FISIM contributing members.

Considering that the fund will be in development over a 10-year period, an annual review of the FISIM is planned, including media coverage.

Visibility and recognition will therefore be updated each year. Partners who join the fund after its launch will also receive visibility based on the amount invested annually.



Photo credit: Dhilmar Éléonore

**For those who will have invested more than one million over 10 years:**

Special recognition will be offered to contributors of more than one million over 10 years, in addition to the items outlined in the visibility plan.

<b>Territory Leader</b>	<b>Transformation Partner</b>	<b>Development Pillar</b>
Annual investment: \$250,000	Annual investment: \$100,000	Annual investment: \$75,000
<b>Digital and Print Visibility</b>		
Clickable logo on the Centraide ATNQ website (FISIM section)	Clickable logo on the Centraide ATNQ website (FISIM section)	Clickable logo on the Centraide ATNQ website (FISIM section)
Visual for email signature	Visual for email signature	Visual for email signature
Mention and quote (50 words) in the annual press release	Mention and quote (30 words) in the annual press release	Mention in the annual press release
Full page in the annual report (photo, logo, quote/CSR 125 words)	Full page in the annual report (photo, logo, quote/CSR 125 words)	Half-page in the annual report (photo, logo, quote 70 words)
Annual social media post (grouped mention of contributors)	Annual social media post (grouped mention of contributors)	Annual social media post (grouped mention of contributors)
Logo on retractable banner, displayed by contribution level	Logo on retractable banner, displayed by contribution level	Logo on retractable banner, displayed by contribution level
Customized internal communications kit (text, header, badge, retractable banner visual)	Customized internal communications kit (text, header, badge, retractable banner visual)	Customized internal communications kit (text, header, badge, retractable banner visual)
Social media post acknowledging your commitment during Mining Week	Social media post acknowledging your commitment during Mining Week	
Video produced in the first year		
<b>Networking and Privileged Access</b>		
Annual meeting of contributors	Annual meeting of contributors	Annual meeting of contributors
Annual private impact report	Annual private impact report	Annual private impact report
Invitation to key events	Invitation to key events	Invitation to key events
Speaking opportunity at FISIM representation events		
<b>Material Recognition and Naming</b>		
Recognition wall listing	Recognition wall listing	Recognition wall listing
Personalized plaque of recognition	Personalized plaque of recognition	Personalized plaque of recognition
Recognition award in the company's name, chosen by the company, presented to an organization or project		

<b>Growth Partner</b>	<b>Mining Builder</b>	<b>Development Ambassador</b>
Annual investment: \$50,000	Annual investment: \$25,000	Annual investment: \$10,000
<b>Digital and Print Visibility</b>		
Clickable logo on the Centraide ATNQ website (FISIM section)	Clickable logo on the Centraide ATNQ website (FISIM section)	Logo on the Centraide ATNQ website (FISIM section)
Visual for email signature	Visual for email signature	Visual for email signature
Mention in the annual press release	Mention in the annual press release	Mention in the annual press release
Half-page in the annual report (photo, logo, quote 70 words)	Mention in the annual report	Mention in the annual report
Customized internal communications kit (text and header)	Customized internal communications kit (text and header)	Basic internal communications kit (text and header)
Annual social media post (grouped mention of contributors)	Annual social media post (grouped mention of contributors)	Annual social media post (grouped mention of contributors)
Logo on retractable banner, displayed by contribution level	Logo on retractable banner, displayed by contribution level	Logo on retractable banner, displayed by contribution level
<b>Networking and Privileged Access</b>		
Annual meeting of contributors	Annual meeting of contributors	Annual meeting of contributors
Annual public impact report	Annual public impact report	
Invitation to key events		
<b>Material Recognition and Naming</b>		
Recognition wall listing	Recognition wall listing	Recognition wall listing
Personalized plaque of recognition	Personalized certificate of recognition	



Photo credit: Agnico Eagle

Édition 2026  
Centraide Abitibi Témiscamingue et Nord-du-Québec



**Centraide**  
Abitibi Témiscamingue  
et Nord-du-Québec